

# Introduction of specimens

Specimen ①  
小幅床勝ち



Specimen ②  
小幅壁勝ち



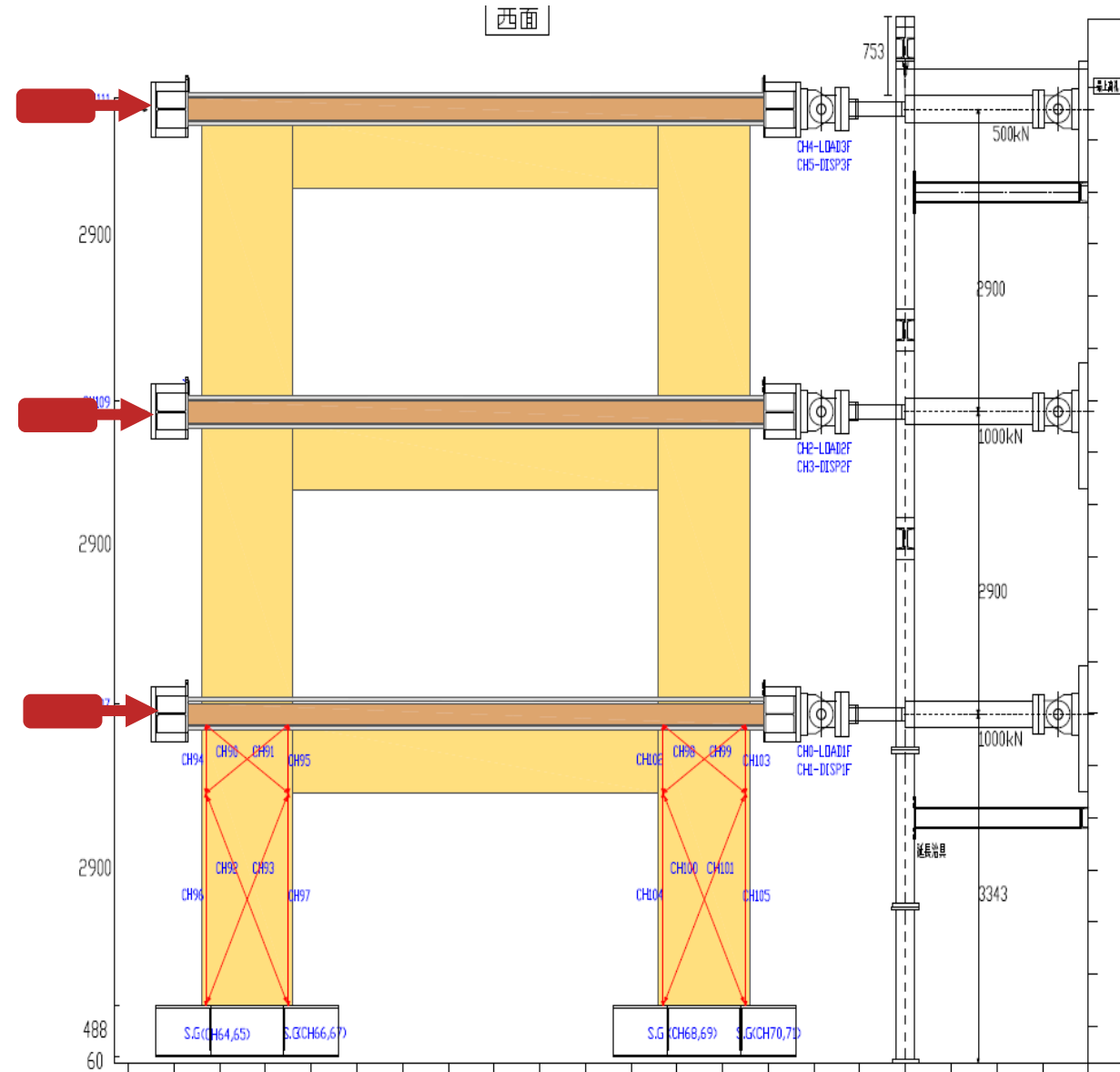
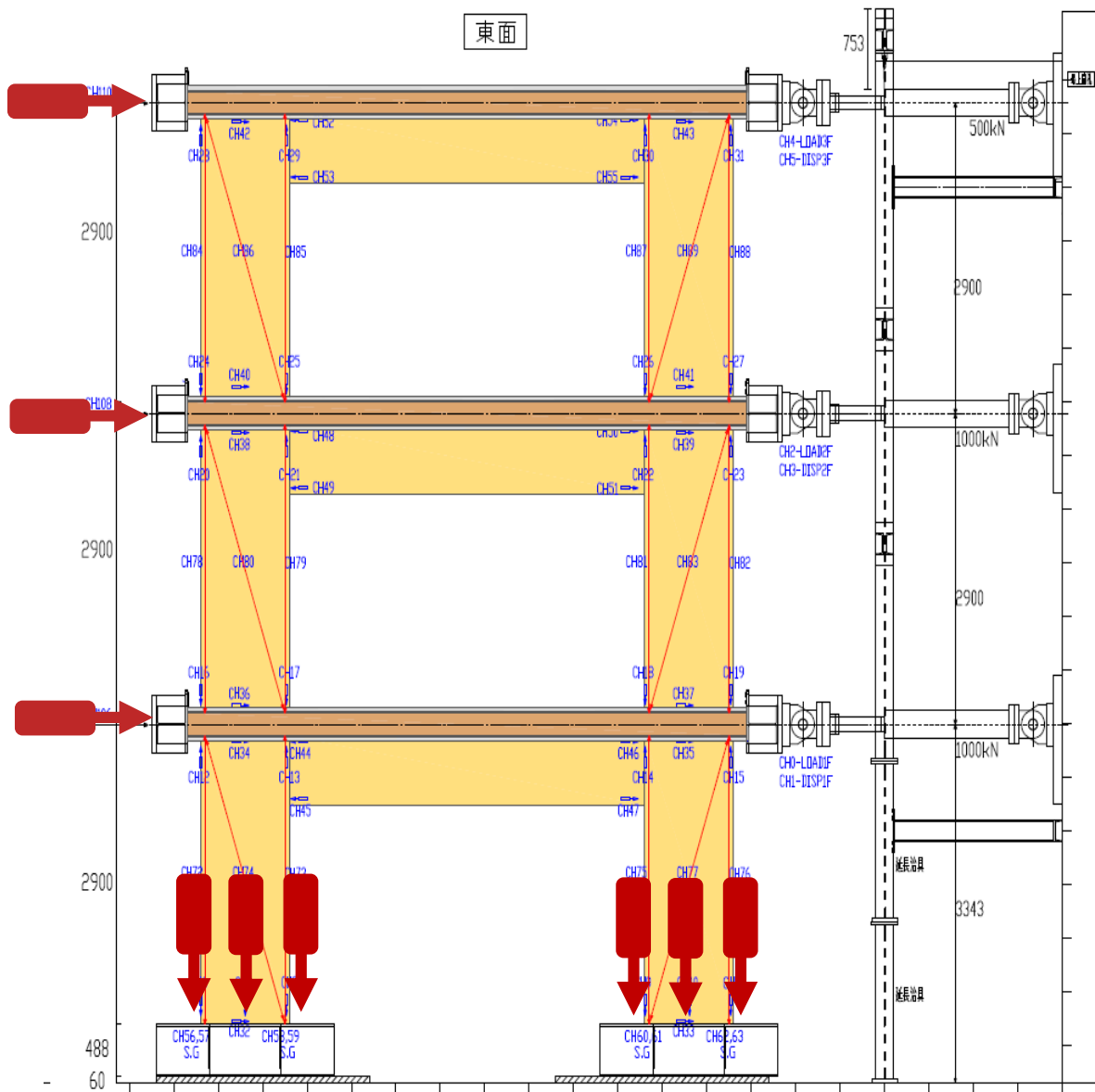
Specimen ③  
大版床勝ち



Specimen ④  
合わせ梁



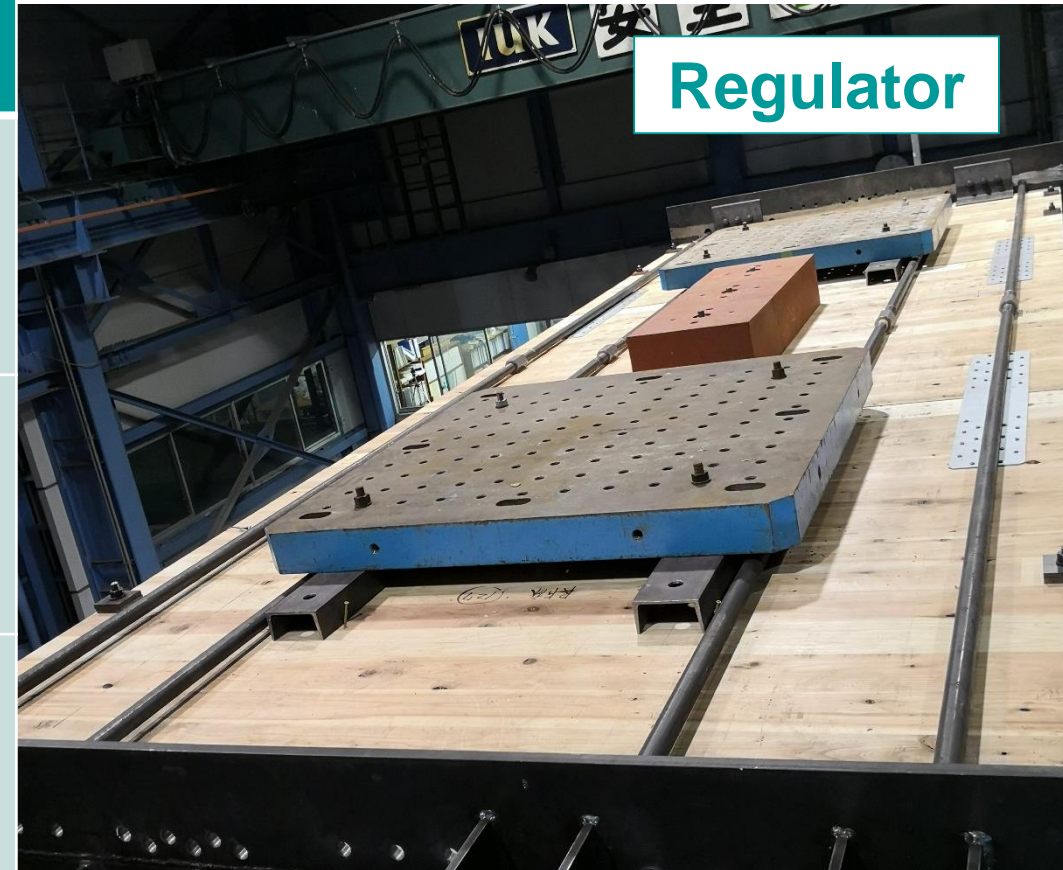
# 1.1 Measurement



# 1.2 Weight setting

Tab. 1 Weight setting of each storey

Storey	Area (m <sup>2</sup> )	Member Weight (kN)	Regulator (kN)	In total (kN)*
3	15	CLT	14.3	96.8
		Loading beam	14.4	
2	15	CLT	16.2	152.0
		Loading beam	14.4	
1	15	CLT	16.2	152.0
		Loading beam	14.4	



\*Equal to half weight of specimens in shake table test